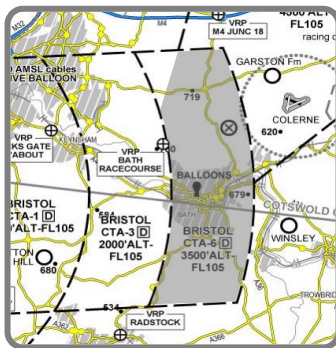


Bath Gap



Bristol CTA-6 (the shaded area centred over Bath) extends from 3500' to FL105, however the bottom 1000' (ie. 3500-4500'), known as the Bath Gap, can be used by gliders, HGs and PGs (flying under VMC) if it has been "activated".

Westbury

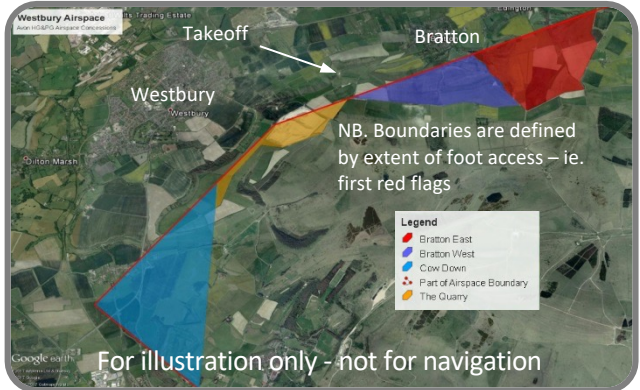
Pilots may, **with permission**, fly through the four concession areas known as **Cow Down, Quarry, Bratton West** and **Bratton East**. Permission to enter Bratton East will only be granted when there is no activity in the entirety of the Salisbury Plain Danger Area. An OpenAir file defining these areas will be posted on the **SW Airspace Notifications Telegram group**.

Emergencies

In the event of any unplanned landings on the MOD estate, notify Salisbury Plain Air Ops immediately on **01980 674710/674730**. If SP Air Ops is closed contact the Range Ops Room **01980 674951/674877**

Bath Gap Activation

1. Check on the **SW Airspace Notifications Telegram group** whether the Bath Gap is active.
2. If it is activated, note the activation end time. If this isn't sufficient to allow you to cross the Gap in time go to step 3 and request the opening time be extended
3. If it's not activated, or you need to extend the activation period, make your request on the **SW Airspace Notifications Telegram group**, and say what time you want it opened from, and for how long
4. Activation will be confirmed on the **SW Airspace Notifications Telegram group** by an Avon Airspace Rep
5. Tell other pilots on the hill!



Remember...

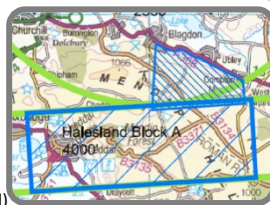
- The Bath Gap can be requested to be opened for hour long chunks of time (eg. 2, 3, 4, 5 hours)
- It can be extended by asking in the **SW Airspace Notifications Telegram group**
- It can be activated no earlier than two hours prior to the ETA of the first glider at the boundary of the Bath Gap
- Gliders operating within the Bath Gap are to operate in accordance with VFR at all times (ie. 1000' below cloud, 1500m horizontally, 5km visibility)
- Please be realistic when requesting activation - ie. if cloudbase is only 3500' then don't open it!
- Visit avonhpgg.co.uk/sites/info_bath_gap.php for more details

Westbury Activation

- Request activation via the **SW Airspace Notifications Telegram group**:
 - Monday – Friday: before 0900
 - Weekends & Bank Holidays: before 1000 on the last working day prior to the weekend / holiday
- For weekend flying you will need to **PLAN IN ADVANCE!**
- Activation will be confirmed on the **SW Airspace Notifications Telegram group** by an Avon Airspace Rep
- **NB. DO NOT ASSUME THAT ACTIVATION WILL BE GRANTED!**
- Please familiarise yourself with the detailed document here http://avonhpgg.co.uk/sites/info_salisbury_plain.php

Ubley

- Ubley take-off is inside Bristol CTR (SFC to FL105)
- The **Ubley Glider Block (UGB)** is a triangular chunk of airspace from the surface to 2,500' that can be activated to fly in from 1000-1900
- On xc days a block from 2,500' - 4,000' can be requested to be opened in **2 hour slots** (NB. 30 min warning required)
- **Halesland Block A (HBA)** must also be activated if you're planning to go xc from Ubley - this raises the base in this part of the CTA from 3000' to 4000'
- Gliders operating within Ubley / Halesland are to operate in accordance with VFR at all times (1000' below cloud, 1500m horizontally, 5km vis)

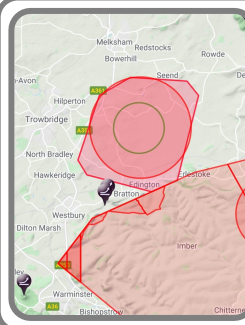


Keevil Drop Zone

As of April 2022, parachute dropping activity at Keevil (approx 1mile NE of Westbury), will be NOTAMed so there is no need to ask its status in the SW Airspace Notifications group.

But be aware that the Bannerdown Gliding Club, who operate out of Keevil, may be towing, so stay alert!

Also look out for Watchkeeper UAV NOTAMs...

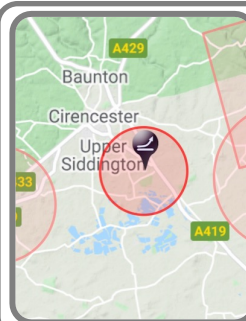


Ubley Activation

Having arrived at Ubley:

1. Make your request on the **SW Airspace Notifications Telegram group** giving details of whether it's just the 2,500' UGB you want open, or 4,000' + HBA, and start/finish times
2. Activation will be confirmed on the **SW Airspace Notifications Telegram group** by an Avon Airspace Rep
3. If you need to extend the two hour 4,000' UGB slot make your request on the **SW Airspace Notifications Telegram group**
4. **Once flying has ceased announce this on SW Airspace Notifications Telegram group**

South Cerney



South Cerney (to the SE of Cirencester), whilst not in the Avon Club's area, may have occasional parachute dropping activity, so this needs to be checked in the **SW Airspace Notifications Telegram group**, although not if there's a NOTAM for Birdwings or Cloudbase paraglider towing there.

NB. Ask on Friday re weekend

How to get Telegram and join the group

- **Telegram** is a superb messaging app for smartphones, tablets and PCs/Macs
- Download it from www.telegram.org
- Once installed, search for “**SW Airspace Notifications**” and join the group
- Why not join start using **XC Retrieve** (see xcrt.aero) – search for “**UK XC Retrieve Vetting Group**” and join this group.

Document History (last few changes)

- | | |
|------------|--|
| 26/02/2015 | Corrected UGB opening times |
| 15/12/2017 | Remove all Avon Rep phone numbers, and other various changes including new Westbury Concession Areas |
| 30/10/2019 | In the Ubley section, remove the bit about notifying ATC once flying has ceased. Also correct the Telegram links |
| 11/05/2020 | Added VFR requirement to fly in Ubley Glider Block and Halesland Block A |
| 12/04/2022 | Removed requirement to ask re Keevil, plus added an entry for South Cerney |